

Budgeted Social Choice: A Framework for Multiple Recommendations in Consensus Decision Making

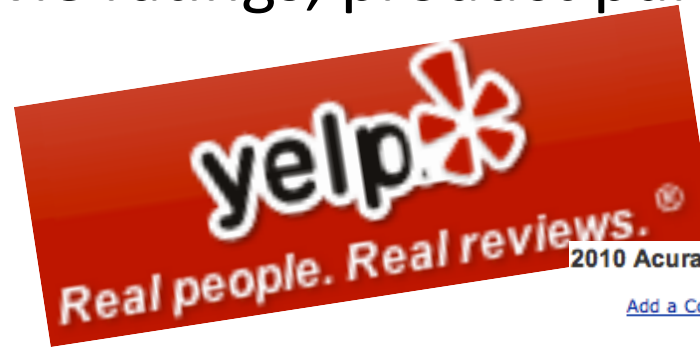
Tyler Lu, Craig Boutilier



Department of Computer Science,
University of Toronto



Background

- Lots of preference data generated nowadays
 - Search clicks, movie ratings, product purchases, ...



2010 Acura ZDX	2005 BMW 645
Add a Competitor	Add a Competitor
	
(2010 Acura ZDX 4dr AWD shown)	(2005 BMW 645 2dr Coupe shown)
rd warranty info ▶	
\$45,495	\$69,900 - \$76,900
\$860	\$695
\$41,737	\$63,790 - \$70,160
300-hp 3.7-liter V-6 (premium)	325-hp 4.4-liter V-8 (premium)

Background

- Recommender systems facilitate personalized product suggestions

These recommendations are based on [items you own](#) and more.

view: **All** | [New Releases](#) | [Coming Soon](#)

[More results](#)

- 

Introduction to Algorithms, Third Edition
by Thomas H. Cormen (Sep 30 2009)
In Stock

List Price: ~~CDN\$ 104.60~~
Price: CDN\$ 57.37
[10 used & new from CDN\\$ 57.37](#)

I own it Not interested Rate this Item

Recommended because you purchased **Pattern Recognition and Machine Learning** and more ([Fix this](#))

[Add to cart](#) [Add to Wish List](#)
- 

Effective STL: 50 Specific Ways to Improve Your Use of the Standard Template Library
by Scott Meyers (Jun 16 2001)
Average Customer Review: (26)
Usually ships in 7 to 10 days

List Price: ~~CDN\$ 54.99~~
Price: CDN\$ 43.99
[23 used & new from CDN\\$ 30.64](#)

I own it Not interested Rate this Item

Recommended because you purchased **The C++ Programming Language: Special Edition** and more ([Fix this](#))

[Add to cart](#) [Add to Wish List](#)
- 

More Effective C++: 35 New Ways to Improve Your Programs and Designs
by Scott Meyers (Jan 8 1996)
Average Customer Review: (29)
In Stock

List Price: ~~CDN\$ 54.99~~

I own it Not interested Rate this Item

Recommended because you purchased **The C++ Programming Language: Special Edition** and more ([Fix this](#))

[Add to cart](#) [Add to Wish List](#)

Motivation

- However sometimes cannot make personalized recommendations
 - Privacy concerns, lack of data
 - Limits on inventory, factory production limits
 - Public projects (e.g. new bus routes; park location)
- More generally, *constraints* on the number of recommendations (“items”) that can be offered

Budgeted Social Choice

- **Providing a middle ground**: assume a budget; consensus decision must not exceed budget.
 - Can build 2 to 4 new bus routes given \$1 million
 - Can configure at most 5 different product lines
- Allows for a spectrum of problems:



- Comes in a variety of flavors depending on the nature of the budget

Our Contributions

- **New class of problems** bridging personalization vs. group decision making
- **Generalization of proportional representation** via a budget
- **Algorithms & analysis**
 - General budgeted social choice
 - Limited Choice/Proportional representation
- **Experiments on real data**

Model 1: Limited Choice

(Illustrative example of budgeted social choice)

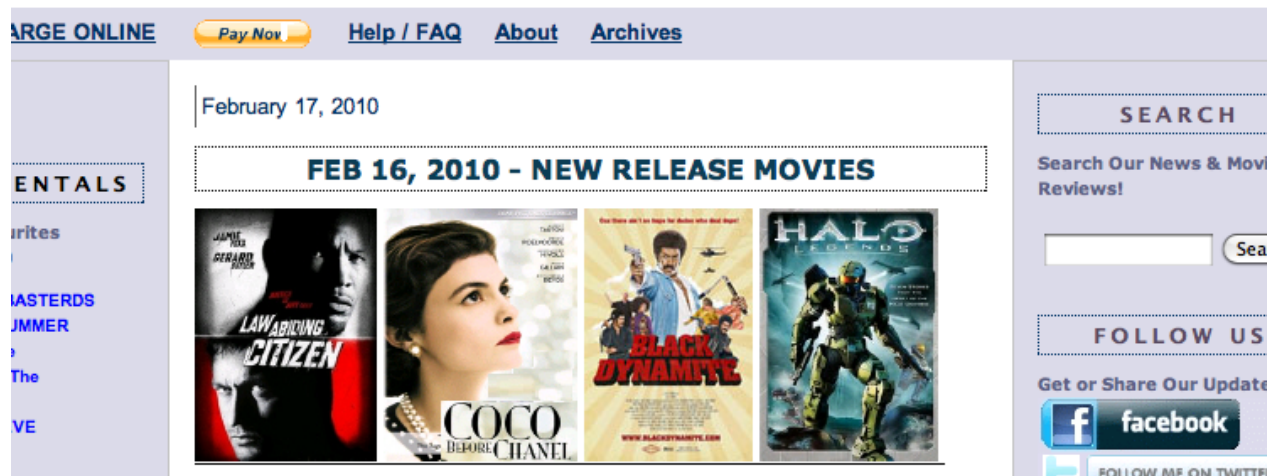
- Alternatives $A = \{a_1, \dots, a_m\}$
- Preference profile $V = (v_1, \dots, v_n)$ where v_i is a ranking
- Positional scoring function α assigns rank position to a non-negative score (e.g. Borda), non-increasing
- Given $K \geq 1$, find Φ subset A size at most K
 - Φ is the “recommendation set”

Goal: $\max_{\Phi} \sum_{\ell=1}^n \max_{a \in \Phi} \alpha(v_{\ell}(a))$ Score of Φ
 $S_{\alpha}(\Phi)$

Limited Choice Examples

KingWestXpress.com

Your neighbourhood video store - re-invented!



Video rental store must decide what new releases to procure.

Has budget to get **4 new movies.**

Which 4 to choose??

New releases Feb. 16, 2010

- Amreeka
- Black Dynamite
- Cabin Fever 2
- Cairo Station
- Coco Before Chanel
- Contempt
- Crude
- ...

Decision space Φ

- N** = # new movies
- N choose 4** subsets

Limited Choice Examples

- Which movies to get depends on what customers like

Rich
Cabin Fever 2
Law Abiding Citizen
Hunger
The Lady Killers
...

Craig
Law Abiding Citizen
Cabin Fever 2
The Lady Killers
Hunger
...

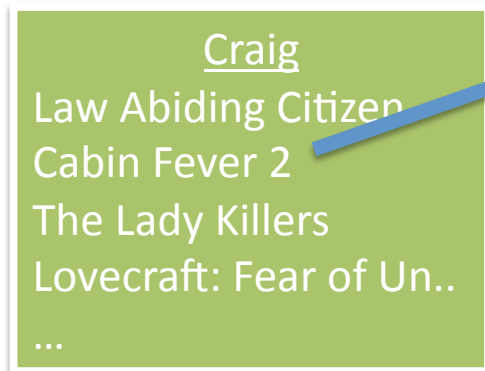
Tyler
Hunger
The Lady Killers
Cabin Fever 2
Law Abiding Citizen
...

- **Single (social) choice:** $K=1$, want to make as many customers as happy as possible
- **Personalization:** K is large, social choice less of an issue, just get movies people want

Limited Choice Example

- Given what video rental store procures:

Movies (Φ) =



Craig benefits from the **most preferred**, gets some “satisfaction” e.g. Borda score of 3

Limited Choice Example

Movies $(\Phi) =$



Total Borda score $= S_{\alpha}(\Phi) =$ Rich's score + Craig's score + Tyler's score
 $= 4 + 3 + 3$

Observations on Limited Choice Model

- Corresponds to Chamberlin & Courant'83, on proportional representation
- Need not be utilitarian: can allow fairness

$$\max_{\Phi} \min_{\ell} \max_{a \in \Phi} \alpha(v_{\ell}(a))$$

- **Theorem** If α is the Borda score, given K, x , deciding if there is a slate Φ with $S_{\alpha}(\Phi) \geq x$ is **NP-complete**
 - Related but different result in Procaccia et al'08

Observations on Limited Choice Model

- How does LCM compare with general positional score ranking (including Borda)?
- **Theorem** If scores are Borda, then picking the top elements K of the Borda ranking is a $1/2$ -approximation to the LCM-optimal slate (tight bound). For arbitrary positional scoring, then picking top K can be at least a factor of K worse than LCM-opt.
- *Reason*: Positional ranking biases to *popular* alternatives, while limited choice aims for *diversity* of alternatives

Greedy Algorithm for LCM

- LCM-opt can be formulated as an IP with #vars, #constraints = $O(\#votes \#items)$ [Potthoff & Brams'98]
- Easy to see that $S_\alpha(\Phi)$ is *submodular*
- Greedy approx. with ratio $1-1/e$ (Nemhauser et al.'78)
 1. $\Phi = \text{empty set}$
 2. Run for K steps:
Update Φ with $\operatorname{argmax}_a S_\alpha(\Phi \cup \{a\})$

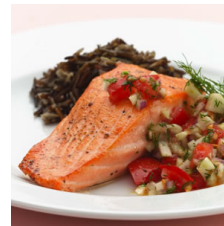
Budgeted Social Choice: General Form

What to have for banquet?

Budget B



Alternatives (dishes)



Fixed costs (e.g., equipment, staff needed to cook): t_a

Unit costs (e.g., cost to produce each dish): u_a

- Can't recommend a subset of dishes, because *how many consumed* matters (e.g. if everyone picks the most expensive dish it will deplete budget)
- Instead use a *recommendation function*: an assignment of people to dishes

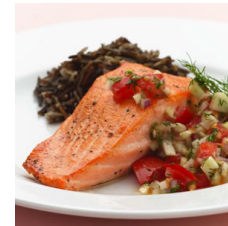
Budgeted Social Choice: General Form

Alternatives (dishes)

Recommendation function Φ :

Cost:

$$C(\Phi) = \text{Fixed} + \text{Unit} = (t_{\text{eggplant}} + t_{\text{calamari}}) + (u_{\text{eggplant}} + 2 \cdot u_{\text{calamari}})$$



Total score: sum of individual scores (welfare)

$$S_{\alpha}(\Phi) = \alpha(\text{Barack eggplant rank}) + \alpha(\text{Kim calamari rank}) + \alpha(\text{Hugo calamari rank})$$

Budgeted Social Choice: General Form

- The goal:
$$\begin{aligned} \max_{\Phi} S_{\alpha}(\Phi) \\ \text{s.t. } C(\Phi) \leq B \end{aligned}$$
- **Specializations**
 - Limited choice: $t_a = 1$ and $u_a = 0$, $B = K$
 - Limited choice with costs: fixed cost varies, $u_a = 0$
- Full personalization: if we can afford everyone's favourite item
- We can have “unassigned” agents by adding a dummy item d with no costs

Greedy Algorithm for BSC

- For each item a , sort agents according to preference for a
- Find “sweet spot”: #agents from sorted list that maximizes ratio of marginal score increase vs. marginal cost increase if they were assigned a
- Find the item a^* that maximizes sweet spot ratio and assign a^* to the i^* agents that maximizes the marginal ratio
- Repeat until **budget depletes**.
 - If minimal fairness required (all agents must be assigned) then do simple backtracking when budget is depleted

Experiments

- Limited Choice
- American Psychological Association 1980 election data – 5 candidates, ~5700 full votes
 - Academics and clinicians on “uneasy terms”
 - $K = 2$, limited choice gives an academic and clinician as optimal set (“diversity”).
 - Greedy is suboptimal (Borda scores) but almost optimal and also gives academic and clinician as solution.



AMERICAN
PSYCHOLOGICAL
ASSOCIATION



Experiments



- Sushi dataset – 10 varieties of sushi, 5000 preference rankings from Japan
- Limited choice
 - Tried various K
 - Tried exponential, Borda, and cubic α
 - Greedy always finds optimal for all K (under 1 sec.)
 - Using Borda & Kemeny rankings gives good approximations
 - CPLEX is slow to solve IP, taking anywhere from 13-90 sec.



Experiments

K	Greedy	Borda	Kemeny	Random	CPLEX (sec.)
2	1.0	1.0	0.932	0.531	49.1
3	1.0	0.986	0.949	0.729	90.38
5	1.0	0.989	0.970	0.813	20.32
7	1.0	1.0	1.0	0.856	13.16



Experiments



- General Budgeted S.C.
 - Randomly generated fixed costs, unit costs were either zero or very small
 - Fixed budget, allowed for 2-5 unique items
 - Greedy is very good within 98-99% of optimal, with runtime 2-5 sec.
 - CPLEX is slow to solve IP, takes 2-5 min.



Conclusions

- Developed a class of problems that range from pure social choice to personalized choices
- Occurs in a variety of real life problems
 - Displaying products/items in electronic commerce
 - Search results, advertising, industrial optimization
- Fast greedy algorithms with excellent approx.
- Future work
 - Dealing with incomplete preferences
 - Using statistical inference/learning, robust inference
 - Trading off social welfare with budget, and other variations